



# CUSTOMISED APPAREL DELIVERED FROM 2 WEEKS!

MINIMUMS FROM  
**50 PIECES**  
IN 5 EASY STEPS!

## 1 CHOOSE YOUR PREFERRED STYLE



100'S OF STYLES TO CHOOSE FROM, OR PROVIDE YOUR OWN INDIVIDUAL DESIGN

## 2 SELECT FROM A DIVERSE RANGE OF FABRICS

### POLO, T-SHIRT & SINGLET FABRICS



### JACKETS



### APRONS



### 3 CUSTOMISE WITH YOUR INDIVIDUAL COLOURS



1000'S OF COLOUR COMBINATIONS TO CHOOSE FROM, OR CUSTOM DYED TO YOUR REQUIREMENTS

### 4 PERSONALISE WITH YOUR LOGO



EMBROIDERY, SCREENPRINTING OR SUBLIMATION DECORATION OPTIONS AVAILABLE

### 5 SELECT YOUR REQUIRED SIZES



KIDS, WOMENS AND MENS SIZES INCLUDED WITHIN THE MINIMUMS

**NO MORE** "IT'S OUT OF STOCK"!  
**NO MORE** BACKORDERS!  
**NO MORE** LIMITED COLOUR OPTIONS!



# SIZING GUIDE

**mens, ladies  
★ kids sizes**

## POLO SHIRTS

| MENS       | XS   | S  | M    | L  | XL   | 2XL | 3XL  | 5XL |      |      |      |  |
|------------|------|----|------|----|------|-----|------|-----|------|------|------|--|
| Half Chest | 50.5 | 53 | 55.5 | 58 | 60.5 | 63  | 68   | 73  |      |      |      |  |
| LADIES     | 6    | 8  | 10   | 12 | 14   | 16  | 18   | 20  | 22   | 24   | 26   |  |
| Half Chest | 42.5 | 45 | 47.5 | 50 | 52.5 | 55  | 57.5 | 60  | 64.5 | 69.5 | 74.5 |  |
| KIDS       | 4    | 6  | 8    | 10 | 12   | 14  | 16   |     |      |      |      |  |
| Half Chest | 36   | 38 | 40   | 42 | 44   | 46  | 49   |     |      |      |      |  |



## T-SHIRTS

| MENS       |      | S  | M    | L  | XL   | 2XL | 3XL  | 5XL |      |      |      |  |
|------------|------|----|------|----|------|-----|------|-----|------|------|------|--|
| Half Chest |      | 53 | 55.5 | 58 | 60.5 | 63  | 68   | 73  |      |      |      |  |
| LADIES     | 6    | 8  | 10   | 12 | 14   | 16  | 18   | 20  | 22   | 24   | 26   |  |
| Half Chest | 42.5 | 45 | 47.5 | 50 | 52.5 | 55  | 57.5 | 60  | 64.5 | 69.5 | 74.5 |  |
| KIDS       | 4    | 6  | 8    | 10 | 12   | 14  | 16   |     |      |      |      |  |
| Half Chest | 36   | 38 | 40   | 42 | 44   | 46  | 49   |     |      |      |      |  |



## SINGLET

| MENS       |    | S    | M    | L    | XL   | 2XL  | 3XL  | 5XL  |
|------------|----|------|------|------|------|------|------|------|
| Half Chest |    | 51   | 53.5 | 56   | 58.5 | 61   | 63.5 | 68.5 |
| LADIES     | 6  | 8    | 10   | 12   | 14   | 16   | 18   | 20   |
| Half Chest | 41 | 43.5 | 46   | 48.5 | 51   | 53.5 | 56.5 | 59.5 |
| KIDS       | 4  | 6    | 8    | 10   | 12   | 14   | 16   |      |
| Half Chest | 35 | 37   | 39   | 41   | 43   | 45   | 48   |      |



## SOFT SHELL JACKETS & VESTS

| MENS       | XS   | S    | M    | L    | XL   | 2XL  | 3XL  | 4XL | 5XL | 6XL |
|------------|------|------|------|------|------|------|------|-----|-----|-----|
| Half Chest | 52.5 | 55   | 57.5 | 60   | 62.5 | 65   | 69.5 | 72  | 75  | 78  |
| LADIES     | 6    | 8    | 10   | 12   | 14   | 16   | 18   | 20  | 22  | 24  |
| Half Chest | 44.5 | 47   | 49.5 | 52   | 54.5 | 57   | 59.5 | 62  | 67  | 72  |
| KIDS       | 6    | 8    | 10   | 12   | 14   | 16   |      |     |     |     |
| Half Chest | 40   | 42.5 | 44.5 | 46.5 | 48.5 | 51.5 |      |     |     |     |



## ACTIVE WEAR JACKETS

| ADULTS     |    | S  | M  | L  | XL | 2XL | 3XL | 5XL |
|------------|----|----|----|----|----|-----|-----|-----|
| Half Chest |    | 56 | 58 | 60 | 62 | 65  | 69  | 74  |
| KIDS       | 4  | 6  | 8  | 10 | 12 | 14  | 16  |     |
| Half Chest | 43 | 45 | 47 | 49 | 51 | 53  | 55  |     |



## ACTIVE WEAR PANTS

| ADULTS             |  | S    | M  | L    | XL | XXL | 3XL | 5XL |  |  |  |  |
|--------------------|--|------|----|------|----|-----|-----|-----|--|--|--|--|
| Relaxed Half Waist |  | 31.5 | 33 | 34.5 | 37 | 40  | 48  | 58  |  |  |  |  |
| KIDS               |  | 4    | 6  | 8    | 10 | 12  | 14  | 16  |  |  |  |  |
| Relaxed Half Waist |  | 24   | 26 | 28   | 30 | 32  | 34  | 36  |  |  |  |  |



## ACTIVE WEAR SHORTS

| MENS               | S    | M    | L    | XL   | XXL  | 3XL  | 5XL  |
|--------------------|------|------|------|------|------|------|------|
| Relaxed Half Waist | 34   | 36.5 | 39   | 41.5 | 44   | 46.5 | 51.5 |
| LADIES             | 6    | 8    | 10   | 12   | 14   | 16   | 18   |
| Relaxed Half Waist | 26.5 | 28.5 | 30.5 | 32.5 | 34.5 | 36.5 | 38.5 |
| KIDS               | 6    | 8    | 10   | 12   | 14   | 16   |      |
| Relaxed Half Waist | 22.5 | 24.5 | 26.5 | 28.5 | 30.5 | 32.5 |      |





# AVAILABLE FABRICS & COLOURS



## POLO, T-SHIRT & SINGLET FABRICS

### PIQUE POLY COTTON

**65% POLYESTER 35% COTTON, 185GSM**

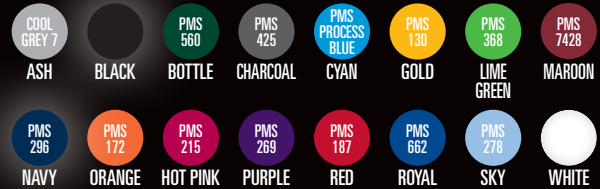
BREATHABLE FABRIC WITH STABILITY AND EXTENDED WASH LIFE. EXCELLENT FOR EMBROIDERY AND SCREEN PRINTING



### BREATHE EASY POLY MESH

**100% POLYESTER, 160GSM**

BREATHABLE EASY CARE LONG LASTING FABRIC. EXCELLENT FOR EMBROIDERY, SCREEN PRINTING AND SUBLIMATION.



### SMOOTH FINISH POLY JERSEY

**100% POLYESTER, 180GSM**

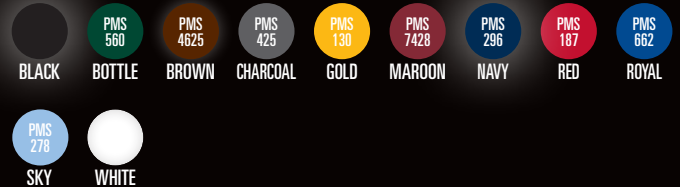
DURABLE AND COMFORTABLE SMOOTH FINISHED FABRIC. EXCELLENT FOR EMBROIDERY, SCREEN PRINTING AND SUBLIMATION.



### SPORTS KNIT POLY PIQUE

**100% POLYESTER, 185GSM**

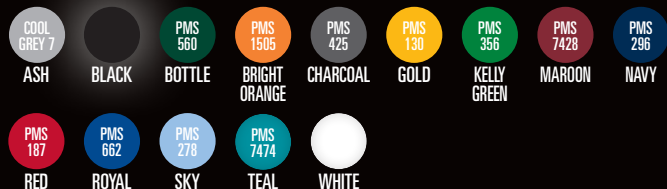
EASY CARE DURABLE AND COMFORTABLE FADE RESISTANT FABRIC. EXCELLENT FOR EMBROIDERY, SCREEN PRINTING AND SUBLIMATION.



### SOFT TOUCH COTTON BACK

**80% POLYESTER 20% COTTON, 180GSM**

SOFT INNER LAYER WITH INCREASED COMFORT AND BREATHABLE OUTER LAYER. EXCELLENT FOR EMBROIDERY AND SCREEN PRINTING.



### LIGHT FEEL POLY CHECK

**100% POLYESTER, 160GSM**

LIGHTWEIGHT AND EASY CARE PREMIUM FABRIC. EXCELLENT FOR EMBROIDERY, SCREEN PRINTING AND SUBLIMATION.



## JACKETS

### SOFT SHELL

**100% BONDED POLYESTER**

WATER REPELLENT AND WIND RESISTANT BREATHABLE FABRIC WITH FLEECE LINING AND NATURAL STRETCH FOR COMFORT. EXCELLENT FOR EMBROIDERY AND SCREEN PRINTING. LIFE.



### MICRO FIBRE RIP STOP

**100% POLYESTER MICROFIBER**

LIGHT WEIGHT DURABLE OUTER LAYER WITH INNER LINING. NEW IMPROVED WEIGHT AND WEARABILITY. EXCELLENT FOR EMBROIDERY AND SCREEN PRINTING.



## APRONS

### REPT RECYCLED POLY COTTON

**80% REPT POLYESTER 20% COTTON, 220-230GSM**

STRONG, DURABLE TEAR AND SHRINK RESISTANT FABRIC. EXCELLENT FOR EMBROIDERY AND SCREEN PRINTING.



### EASY CARE POLY

**170-180GSM**

STRONG, DURABLE TEAR, SHRINK AND FADE RESISTANT EASY CARE FABRIC. EXCELLENT FOR EMBROIDERY, SCREEN PRINTING AND SUBLIMATION.





# SINGLET

# SMOOTH FINISH POLY JERSEY

3000







## SMOOTH FINISH POLY JERSEY 3000

### SPECIFICATIONS

SINGLET

POLY MESH CONTRAST INSERTS  
CONTRAST STRIPES

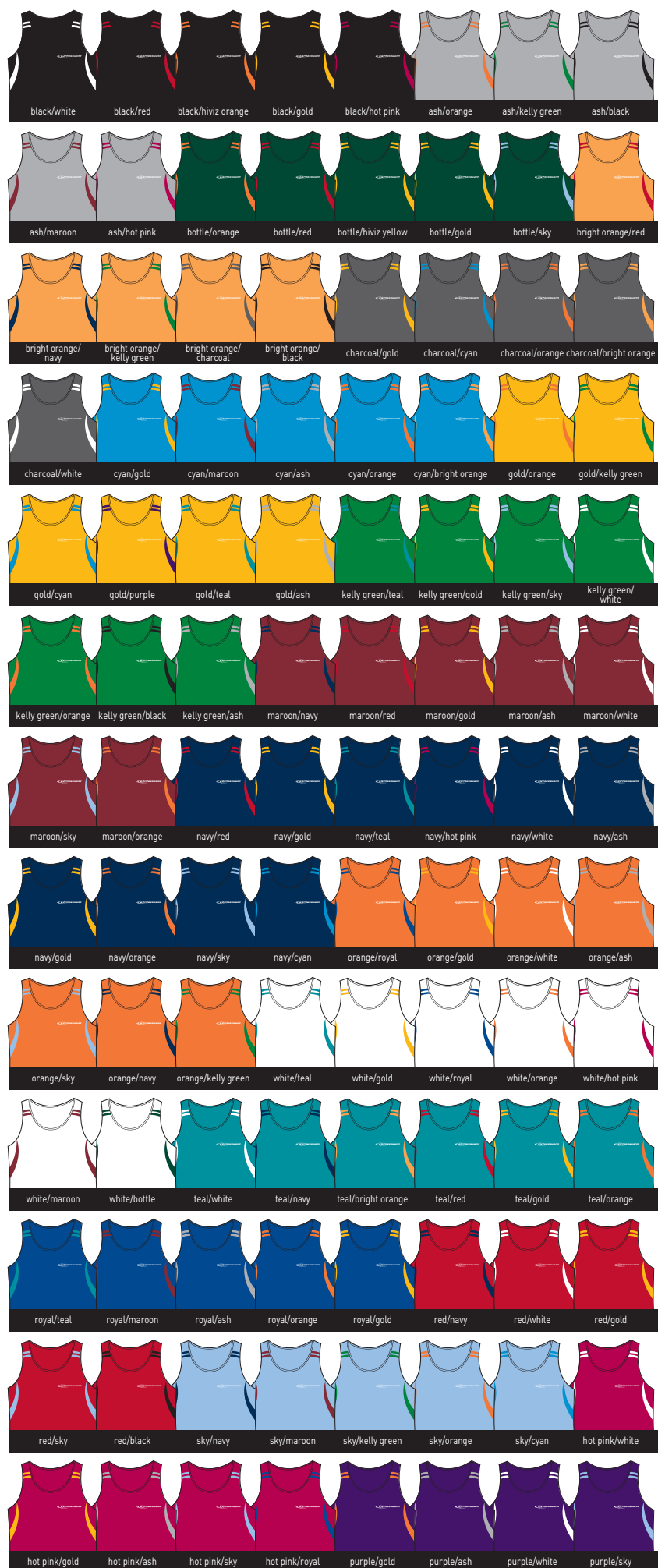
### DECORATION

EMBROIDERY  
SCREEN PRINT  
SUBLIMATION



### AVAILABLE IN MENS, LADIES & KIDS SIZES

| MENS | LADIES | KIDS |
|------|--------|------|
| XS   | 6      | 4    |
| S    | 8      | 6    |
| M    | 10     | 8    |
| L    | 12     | 10   |
| XL   | 14     | 12   |
| 2XL  | 16     | 14   |
| 3XL  | 18     | 16   |
| 5XL  | 20     |      |
|      | 22     |      |
|      | 24     |      |
|      | 26     |      |



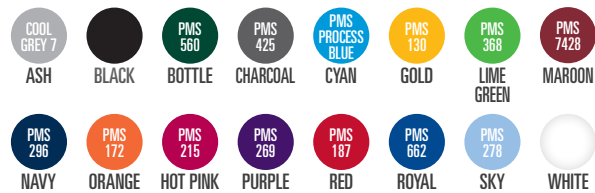
## BREATHE EASY POLY MESH

3001

**SPECIFICATIONS** | SINGLET | MEN'S, LADIES & KIDS SIZES | CONTRAST INSERTS

**DECORATION** | EMBROIDERY | SCREEN PRINT | SUBLIMATION

### COLOURS AVAILABLE IN THIS FABRIC



## LIGHT FEEL POLY CHECK

3002

**SPECIFICATIONS** | SINGLET | MEN'S, LADIES & KIDS SIZES | POLY MESH CONTRAST INSERTS

**DECORATION** | EMBROIDERY | SCREEN PRINT | SUBLIMATION

### COLOURS AVAILABLE IN THIS FABRIC



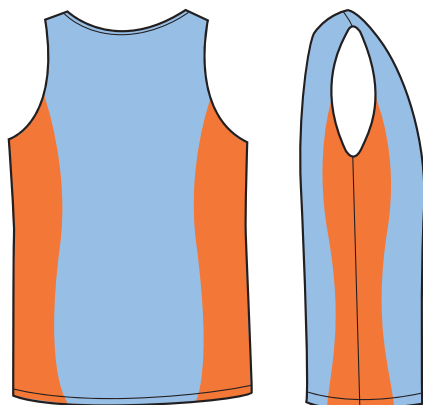
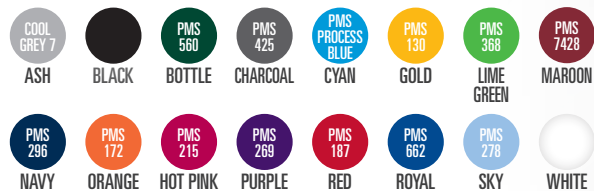
## BREATHE EASY POLY MESH

3003

**SPECIFICATIONS** | SINGLET | MEN'S, LADIES & KIDS SIZES | CONTRAST INSERTS

**DECORATION** | EMBROIDERY | SCREEN PRINT | SUBLIMATION

### COLOURS AVAILABLE IN THIS FABRIC



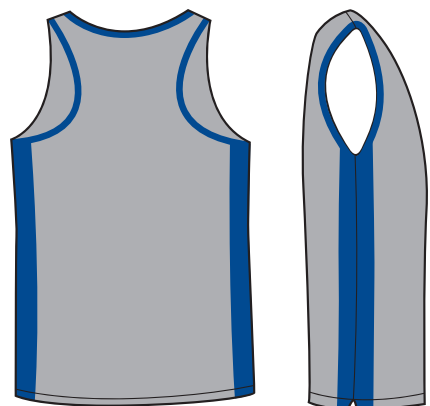
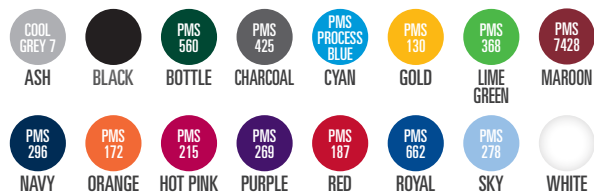
## BREATHE EASY POLO MESH

3004

**SPECIFICATIONS** | SINGLET | MEN'S, LADIES & KIDS SIZES | CONTRAST INSERTS  
| CONTRAST NECK & ARMHOLES | RACER BACK

**DECORATION** | EMBROIDERY | SCREEN PRINT | SUBLIMATION

### COLOURS AVAILABLE IN THIS FABRIC





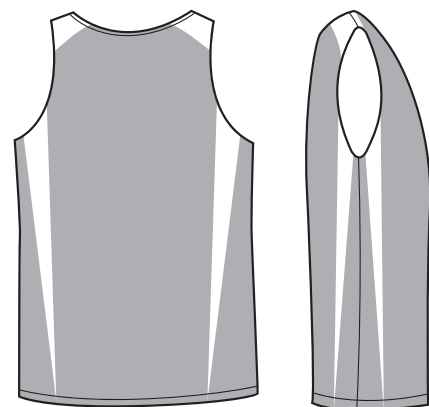
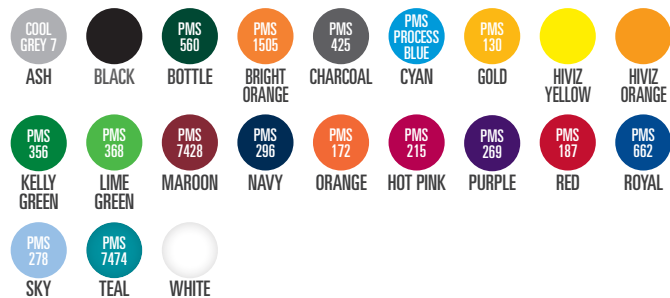
# LIGHT FEEL POLY CHECK

3005

**SPECIFICATIONS** | SINGLET | MEN'S, LADIES & KIDS SIZES | CONTRAST INSERTS

**DECORATION** | EMBROIDERY | SCREEN PRINT | SUBLIMATION

## COLOURS AVAILABLE IN THIS FABRIC



# LIGHT FEEL POLY CHECK

3006

**SPECIFICATIONS** | SINGLET | MEN'S, LADIES & KIDS SIZES | CONTRAST INSERTS

**DECORATION** | EMBROIDERY | SCREEN PRINT | SUBLIMATION

## COLOURS AVAILABLE IN THIS FABRIC



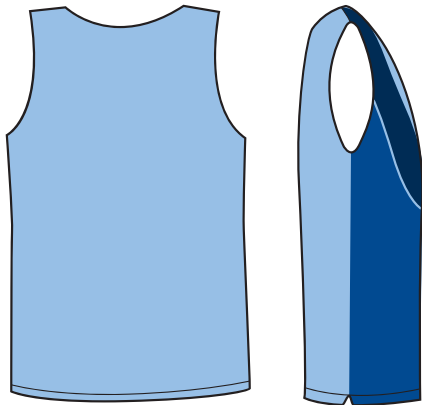
## BREATHE EASY POLY MESH

3007

**SPECIFICATIONS** | SINGLET | MEN'S, LADIES & KIDS SIZES | CONTRAST INSERTS

**DECORATION** | EMBROIDERY | SCREEN PRINT | SUBLIMATION

### COLOURS AVAILABLE IN THIS FABRIC



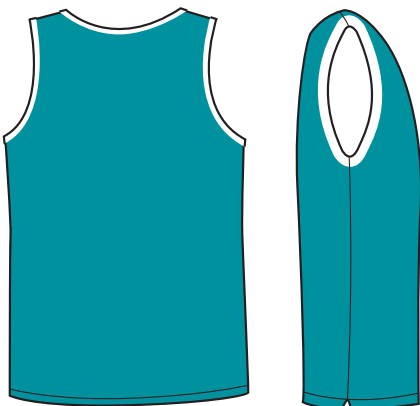
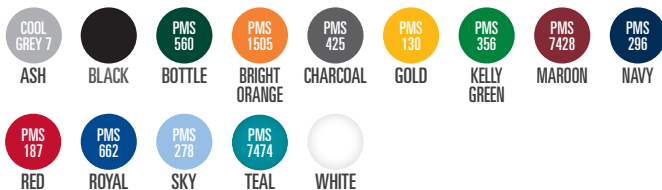
## SOFT TOUCH COTTON BACK

3008

**SPECIFICATIONS** | SINGLET | MEN'S, LADIES & KIDS SIZES | CONTRAST NECK & ARMHOLES

**DECORATION** | EMBROIDERY | SCREEN PRINT | SUBLIMATION

### COLOURS AVAILABLE IN THIS FABRIC



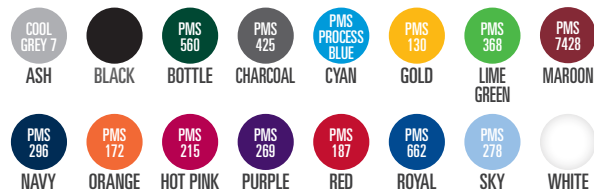
## BREATHE EASY POLY MESH

3009

**SPECIFICATIONS** | SINGLET | MEN'S, LADIES & KIDS SIZES | CONTRAST INSERTS

**DECORATION** | EMBROIDERY | SCREEN PRINT | SUBLIMATION

### COLOURS AVAILABLE IN THIS FABRIC



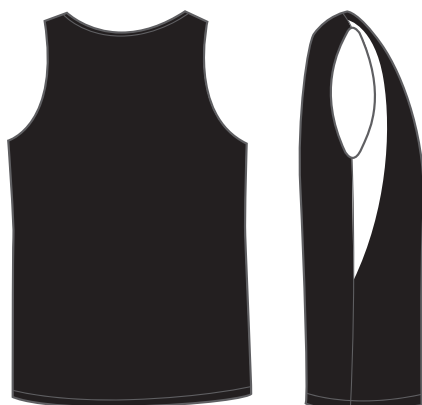
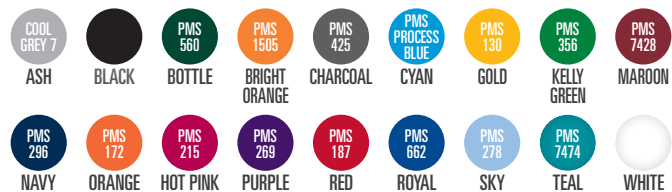
## SMOOTH FINISH POLY JERSEY

3010

**SPECIFICATIONS** | SINGLET | MEN'S, LADIES & KIDS SIZES | CONTRAST INSERTS | MUSCLE CUT

**DECORATION** | EMBROIDERY | SCREEN PRINT | SUBLIMATION

### COLOURS AVAILABLE IN THIS FABRIC





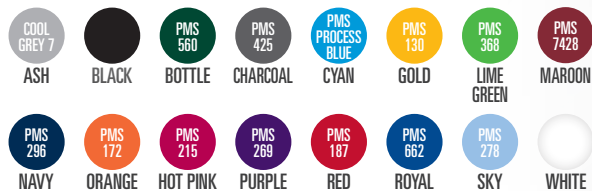
## BREATHE EASY POLY MESH

3011

**SPECIFICATIONS** | SINGLET | MEN'S, LADIES & KIDS SIZES | CONTRAST INSERTS  
| CONTRAST ARMHOLES

**DECORATION** | EMBROIDERY | SCREEN PRINT | SUBLIMATION

### COLOURS AVAILABLE IN THIS FABRIC



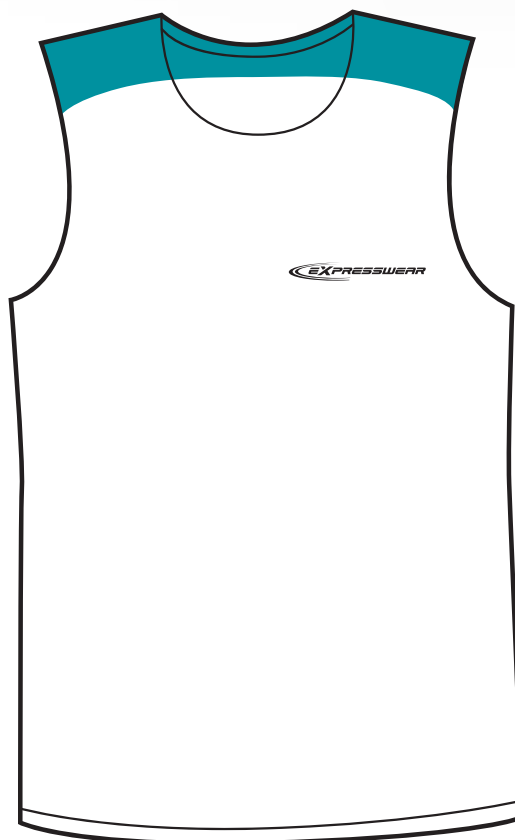
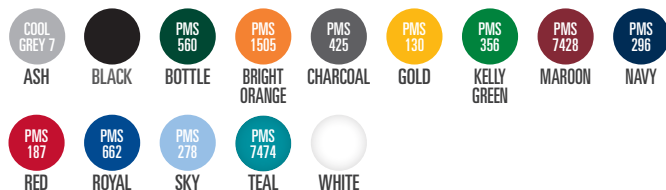
## SOFT TOUCH COTTON BACK

3012

**SPECIFICATIONS** | SINGLET | MEN'S, LADIES & KIDS SIZES | CONTRAST INSERTS | MUSCLE CUT

**DECORATION** | EMBROIDERY | SCREEN PRINT | SUBLIMATION

### COLOURS AVAILABLE IN THIS FABRIC



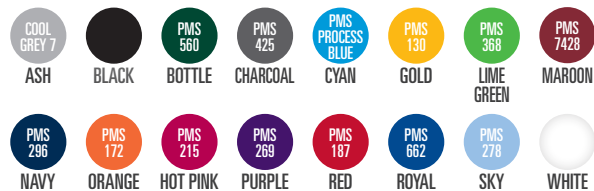
# BREATHE EASY POLY MESH

3013

**SPECIFICATIONS** | SINGLET | MEN'S, LADIES & KIDS SIZES | CONTRAST NECK AND ARMHOLES

**DECORATION** | EMBROIDERY | SCREEN PRINT | SUBLIMATION

## COLOURS AVAILABLE IN THIS FABRIC



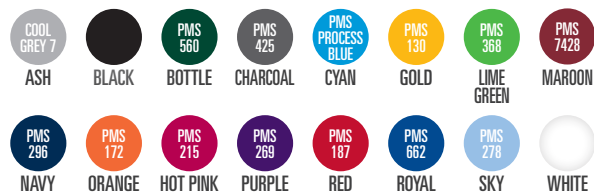
# BREATHE EASY POLY MESH

3014

**SPECIFICATIONS** | SINGLET | MEN'S, LADIES & KIDS SIZES | CONTRAST STITCHING

**DECORATION** | EMBROIDERY | SCREEN PRINT | SUBLIMATION

## COLOURS AVAILABLE IN THIS FABRIC



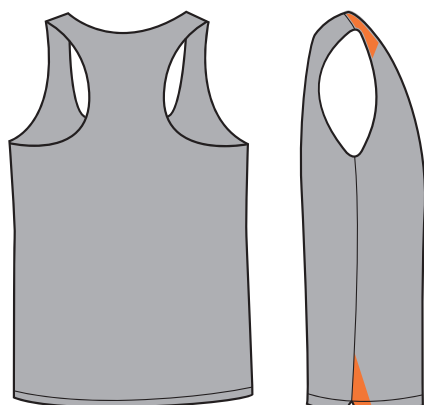
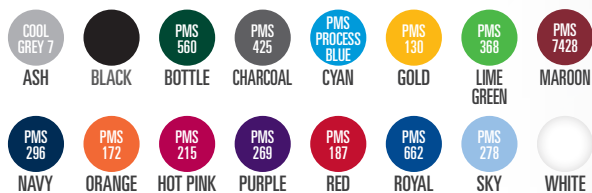
## BREATHE EASY POLY MESH

3015

**SPECIFICATIONS** | SINGLET | MEN'S, LADIES & KIDS SIZES | CONTRAST INSERTS  
| RACER BACK

**DECORATION** | EMBROIDERY | SCREEN PRINT | SUBLIMATION

### COLOURS AVAILABLE IN THIS FABRIC



## LIGHT FEEL POLY CHECK

3016

**SPECIFICATIONS** | SINGLET | MEN'S, LADIES & KIDS SIZES | CONTRAST INSERTS

**DECORATION** | EMBROIDERY | SCREEN PRINT | SUBLIMATION

### COLOURS AVAILABLE IN THIS FABRIC





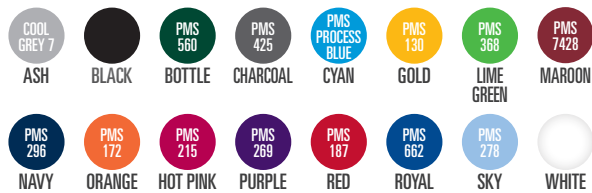
## BREATHE EASY POLY MESH

3018

**SPECIFICATIONS** | SINGLET | MEN'S, LADIES & KIDS SIZES

**DECORATION** | EMBROIDERY | SCREEN PRINT | SUBLIMATION

### COLOURS AVAILABLE IN THIS FABRIC



## LIGHT FEEL POLY CHECK

3019

**SPECIFICATIONS** | SINGLET | MEN'S, LADIES & KIDS SIZES | CONTRAST INSERTS, NECK & ARMHOLES

**DECORATION** | EMBROIDERY | SCREEN PRINT | SUBLIMATION

### COLOURS AVAILABLE IN THIS FABRIC



## LIGHT FEEL POLY CHECK

3020

**SPECIFICATIONS** | SINGLET | MEN'S, LADIES & KIDS SIZES | CONTRAST INSERTS

**DECORATION** | EMBROIDERY | SCREEN PRINT | SUBLIMATION

### COLOURS AVAILABLE IN THIS FABRIC



## BREATHE EASY POLY MESH

3021

**SPECIFICATIONS** | SINGLET | MEN'S, LADIES & KIDS SIZES | CONTRAST INSERTS

**DECORATION** | EMBROIDERY | SCREEN PRINT | SUBLIMATION

### COLOURS AVAILABLE IN THIS FABRIC



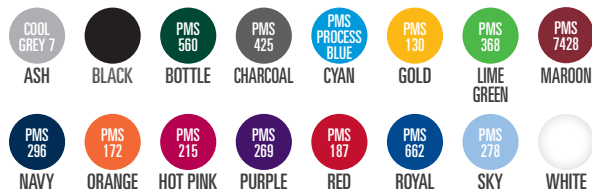
# BREATHE EASY POLY MESH

3023

**SPECIFICATIONS** | SINGLET | MEN'S, LADIES & KIDS SIZES | CONTRAST INSERTS  
| CONTRAST PIPING

**DECORATION** | EMBROIDERY | SCREEN PRINT | SUBLIMATION

## COLOURS AVAILABLE IN THIS FABRIC



# LIGHT FEEL POLY CHECK

3024

**SPECIFICATIONS** | SINGLET | MEN'S, LADIES & KIDS SIZES | CONTRAST INSERTS  
| CONTRAST PIPING

**DECORATION** | EMBROIDERY | SCREEN PRINT | SUBLIMATION

## COLOURS AVAILABLE IN THIS FABRIC



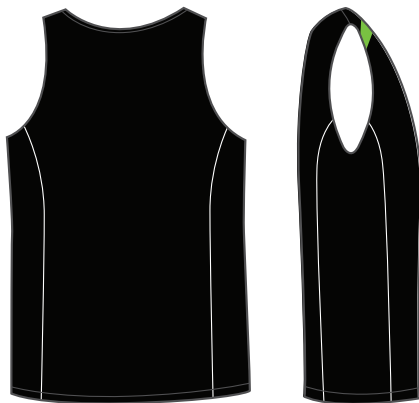
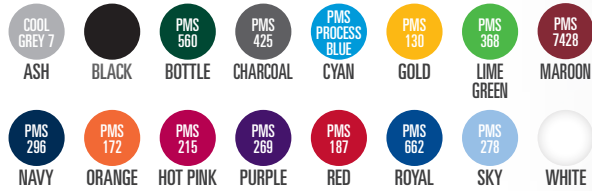
## BREATHE EASY POLY MESH

3025

**SPECIFICATIONS** | SINGLET | MEN'S, LADIES & KIDS SIZES | CONTRAST INSERTS  
| CONTRAST PIPING

**DECORATION** | EMBROIDERY | SCREEN PRINT | SUBLIMATION

### COLOURS AVAILABLE IN THIS FABRIC



## LIGHT FEEL POLY CHECK

3026

**SPECIFICATIONS** | SINGLET | MEN'S, LADIES & KIDS SIZES | CONTRAST INSERTS  
| CONTRAST PIPING

**DECORATION** | EMBROIDERY | SCREEN PRINT | SUBLIMATION

### COLOURS AVAILABLE IN THIS FABRIC





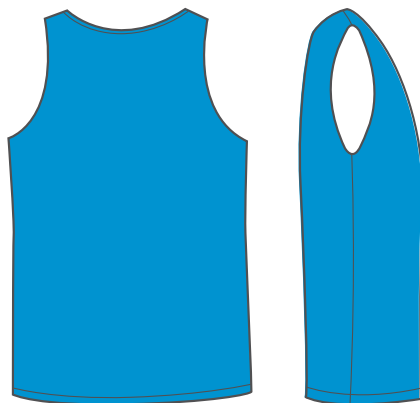
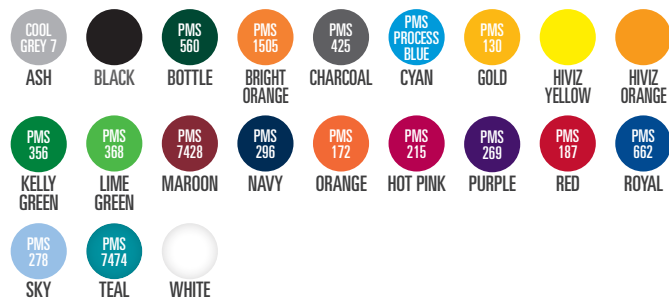
## LIGHT FEEL POLY CHECK

3027

**SPECIFICATIONS** | SINGLET | MEN'S, LADIES & KIDS SIZES

**DECORATION** | EMBROIDERY | SCREEN PRINT | SUBLIMATION

### COLOURS AVAILABLE IN THIS FABRIC



## SMOOTH FINISH POLY JERSEY

3028

**SPECIFICATIONS** | SINGLET | MEN'S, LADIES & KIDS SIZES

**DECORATION** | EMBROIDERY | SCREEN PRINT | SUBLIMATION

### COLOURS AVAILABLE IN THIS FABRIC



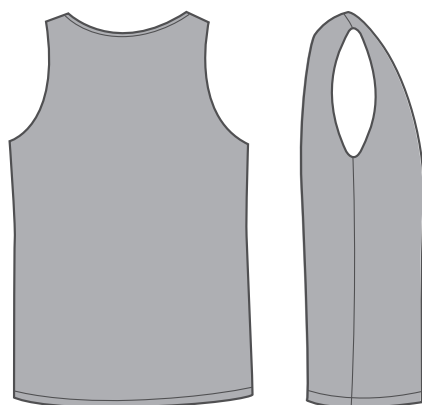
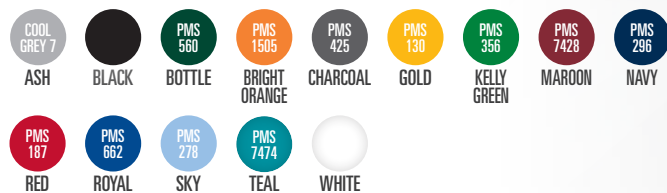
## SOFT TOUCH COTTON BACK

3029

**SPECIFICATIONS** | SINGLET | MEN'S, LADIES & KIDS SIZES

**DECORATION** | EMBROIDERY | SCREEN PRINT | SUBLIMATION

### COLOURS AVAILABLE IN THIS FABRIC



## SMOOTH FINISH POLY JERSEY

3030

**SPECIFICATIONS** | SINGLET | MEN'S, LADIES & KIDS SIZES | CONTRAST INSERTS & PIPING  
| POLY MESH MATCHING INSERTS

**DECORATION** | EMBROIDERY | SCREEN PRINT | SUBLIMATION

### COLOURS AVAILABLE IN THIS FABRIC



A blue polo shirt and a white long-sleeved jacket with green accents and Castrol/FIFA World Cup branding. The blue shirt is on the left, and the white jacket is on the right. The jacket features a green Castrol logo and the FIFA World Cup Brazil 2014 logo on the back.

FASTEST IN FASHION