

# FASTEST IN FASHION

# CUSTOMISED APPAREL DELIVERED FROM 2 WEEKS!

MINIMUMS FROM  
**50 PIECES**  
IN 5 EASY STEPS!

## 1 CHOOSE YOUR PREFERRED STYLE



100'S OF STYLES TO CHOOSE FROM, OR PROVIDE YOUR OWN INDIVIDUAL DESIGN

## 2 SELECT FROM A DIVERSE RANGE OF FABRICS

### POLO, T-SHIRT & SINGLET FABRICS



### JACKETS



### APRONS



### 3 CUSTOMISE WITH YOUR INDIVIDUAL COLOURS



1000'S OF COLOUR COMBINATIONS TO CHOOSE FROM, OR CUSTOM DYED TO YOUR REQUIREMENTS

### 4 PERSONALISE WITH YOUR LOGO



EMBROIDERY, SCREENPRINTING OR SUBLIMATION DECORATION OPTIONS AVAILABLE

### 5 SELECT YOUR REQUIRED SIZES



KIDS, WOMENS AND MENS SIZES INCLUDED WITHIN THE MINIMUMS

**NO MORE** "IT'S OUT OF STOCK"!  
**NO MORE** BACKORDERS!  
**NO MORE** LIMITED COLOUR OPTIONS!



# SIZING GUIDE

**mens, ladies  
★ kids sizes**

## POLO SHIRTS

MENS	XS	S	M	L	XL	2XL	3XL	5XL				
Half Chest	50.5	53	55.5	58	60.5	63	68	73				
LADIES	6	8	10	12	14	16	18	20	22	24	26	
Half Chest	42.5	45	47.5	50	52.5	55	57.5	60	64.5	69.5	74.5	
KIDS	4	6	8	10	12	14	16					
Half Chest	36	38	40	42	44	46	49					



## T-SHIRTS

MENS	S	M	L	XL	2XL	3XL	5XL					
Half Chest	53	55.5	58	60.5	63	68	73					
LADIES	6	8	10	12	14	16	18	20	22	24	26	
Half Chest	42.5	45	47.5	50	52.5	55	57.5	60	64.5	69.5	74.5	
KIDS	4	6	8	10	12	14	16					
Half Chest	36	38	40	42	44	46	49					



## SINGLETs

MENS		S	M	L	XL	2XL	3XL	5XL	
Half Chest		51	53.5	56	58.5	61	63.5	68.5	
LADIES	6	8	10	12	14	16	18	20	
Half Chest		41	43.5	46	48.5	51	53.5	56.5	59.5
KIDS	4	6	8	10	12	14	16		
Half Chest		35	37	39	41	43	45	48	



## SOFT SHELL JACKETS & VESTS

MENS	XS	S	M	L	XL	2XL	3XL	4XL	5XL	6XL
Half Chest	52.5	55	57.5	60	62.5	65	69.5	72	75	78
LADIES	6	8	10	12	14	16	18	20	22	24
Half Chest	44.5	47	49.5	52	54.5	57	59.5	62	67	72
KIDS	6	8	10	12	14	16				
Half Chest	40	42.5	44.5	46.5	48.5	51.5				



## ACTIVE WEAR JACKETS

ADULTS	S	M	L	XL	2XL	3XL	5XL					
Half Chest	56	58	60	62	65	69	74					
KIDS	4	6	8	10	12	14	16					
Half Chest	43	45	47	49	51	53	55					



## ACTIVE WEAR PANTS

ADULTS	S	M	L	XL	XXL	3XL	5XL					
Relaxed Half Waist	31.5	33	34.5	37	40	48	58					
KIDS	4	6	8	10	12	14	16					
Relaxed Half Waist	24	26	28	30	32	34	36					



## ACTIVE WEAR SHORTS

MENS	S	M	L	XL	XXL	3XL	5XL
Relaxed Half Waist	34	36.5	39	41.5	44	46.5	51.5
LADIES	6	8	10	12	14	16	18
Relaxed Half Waist	26.5	28.5	30.5	32.5	34.5	36.5	38.5
KIDS	6	8	10	12	14	16	
Relaxed Half Waist	22.5	24.5	26.5	28.5	30.5	32.5	





# AVAILABLE FABRICS & COLOURS



## POLO, T-SHIRT & SINGLET FABRICS

### PIQUE POLY COTTON

**65% POLYESTER 35% COTTON, 185GSM**

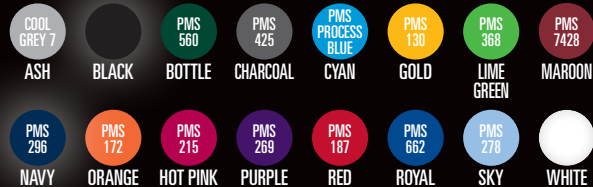
BREATHABLE FABRIC WITH STABILITY AND EXTENDED WASH LIFE. EXCELLENT FOR EMBROIDERY AND SCREEN PRINTING



### BREATHE EASY POLY MESH

**100% POLYESTER, 160GSM**

BREATHABLE EASY CARE LONG LASTING FABRIC. EXCELLENT FOR EMBROIDERY, SCREEN PRINTING AND SUBLIMATION.



### SMOOTH FINISH POLY JERSEY

**100% POLYESTER, 180GSM**

DURABLE AND COMFORTABLE SMOOTH FINISHED FABRIC. EXCELLENT FOR EMBROIDERY, SCREEN PRINTING AND SUBLIMATION.



### SPORTS KNIT POLY PIQUE

**100% POLYESTER, 185GSM**

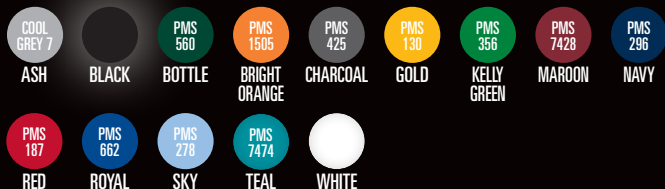
EASY CARE DURABLE AND COMFORTABLE FADE RESISTANT FABRIC. EXCELLENT FOR EMBROIDERY, SCREEN PRINTING AND SUBLIMATION.



### SOFT TOUCH COTTON BACK

**80% POLYESTER 20% COTTON, 180GSM**

SOFT INNER LAYER WITH INCREASED COMFORT AND BREATHABLE OUTER LAYER. EXCELLENT FOR EMBROIDERY AND SCREEN PRINTING.



### LIGHT FEEL POLY CHECK

**100% POLYESTER, 160GSM**

LIGHTWEIGHT AND EASY CARE PREMIUM FABRIC. EXCELLENT FOR EMBROIDERY, SCREEN PRINTING AND SUBLIMATION.



## JACKETS

### SOFT SHELL

**100% BONDED POLYESTER**

WATER REPELLENT AND WIND RESISTANT BREATHABLE FABRIC WITH FLEECE LINING AND NATURAL STRETCH FOR COMFORT. EXCELLENT FOR EMBROIDERY AND SCREEN PRINTING. LIFE.



### MICRO FIBRE RIP STOP

**100% POLYESTER MICROFIBER**

LIGHT WEIGHT DURABLE OUTER LAYER WITH INNER LINING. NEW IMPROVED WEIGHT AND WEARABILITY. EXCELLENT FOR EMBROIDERY AND SCREEN PRINTING.



## APRONS

### REPT RECYCLED POLY COTTON

**80% REPT POLYESTER 20% COTTON, 220-230GSM**

STRONG, DURABLE TEAR AND SHRINK RESISTANT FABRIC. EXCELLENT FOR EMBROIDERY AND SCREEN PRINTING.



### EASY CARE POLY

**170-180GSM**

STRONG, DURABLE TEAR, SHRINK AND FADE RESISTANT EASY CARE FABRIC. EXCELLENT FOR EMBROIDERY, SCREEN PRINTING AND SUBLIMATION.





**T-SHIRTS**

# BREATHE EASY POLY MESH

2031







## BREATHE EASY POLY MESH 2031

### SPECIFICATIONS

SHORT SLEEVE T-SHIRT  
CONTRAST INSERTS  
CONTRAST PIPING  
CREW NECK

### DECORATION

EMBROIDERY  
SCREEN PRINT  
SUBLIMATION



### AVAILABLE IN MENS, LADIES & KIDS SIZES

MENS	LADIES	KIDS
XS	6	4
S	8	6
M	10	8
L	12	10
XL	14	12
2XL	16	14
3XL	18	16
5XL	20	
	22	
	24	
	26	



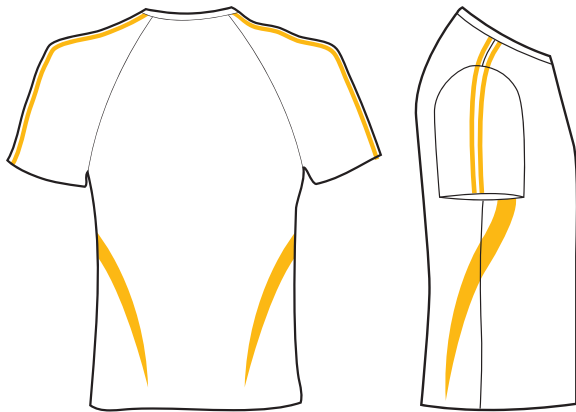
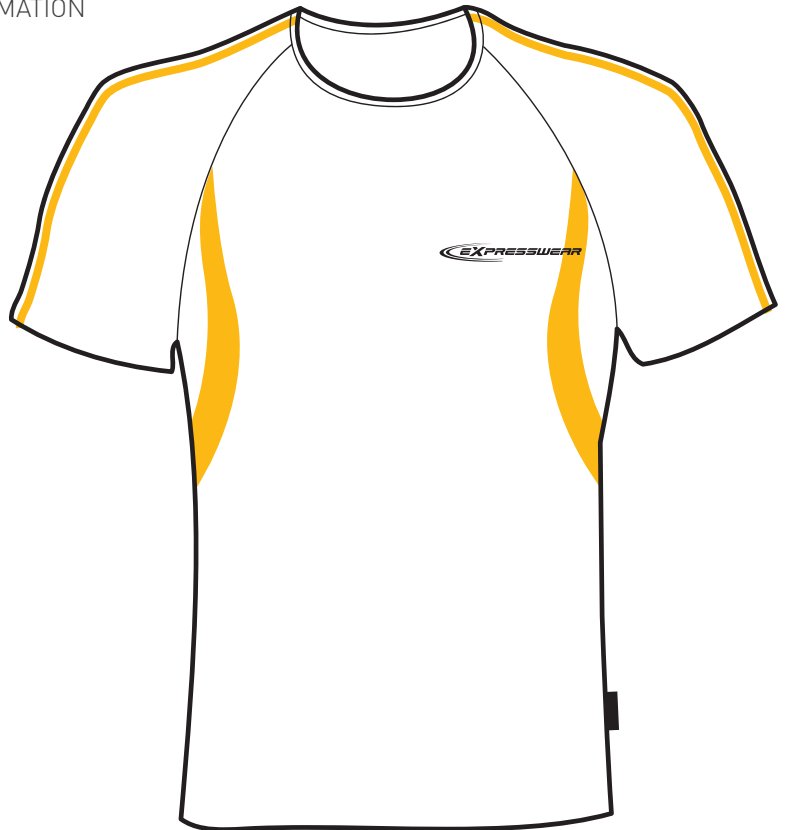
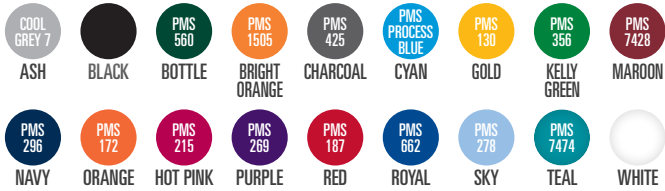
# SMOOTH FINISH POLY JERSEY

2000

**SPECIFICATIONS** | SHORT SLEEVE T-SHIRT | MEN'S, LADIES & KIDS SIZES | POLY MESH  
CONTRAST INSERTS | CONTRAST STRIPES | CREW NECK

**DECORATION** | EMBROIDERY | SCREEN PRINT | SUBLIMATION

## COLOURS AVAILABLE IN THIS FABRIC



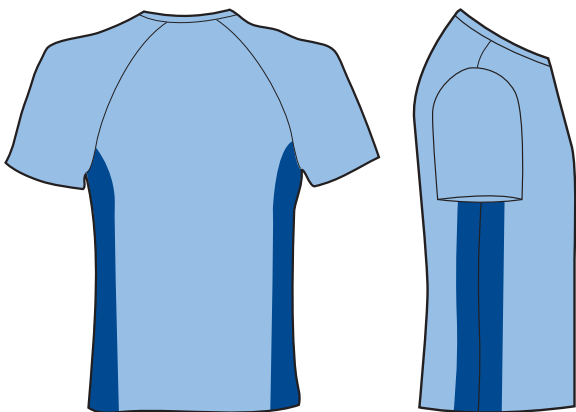
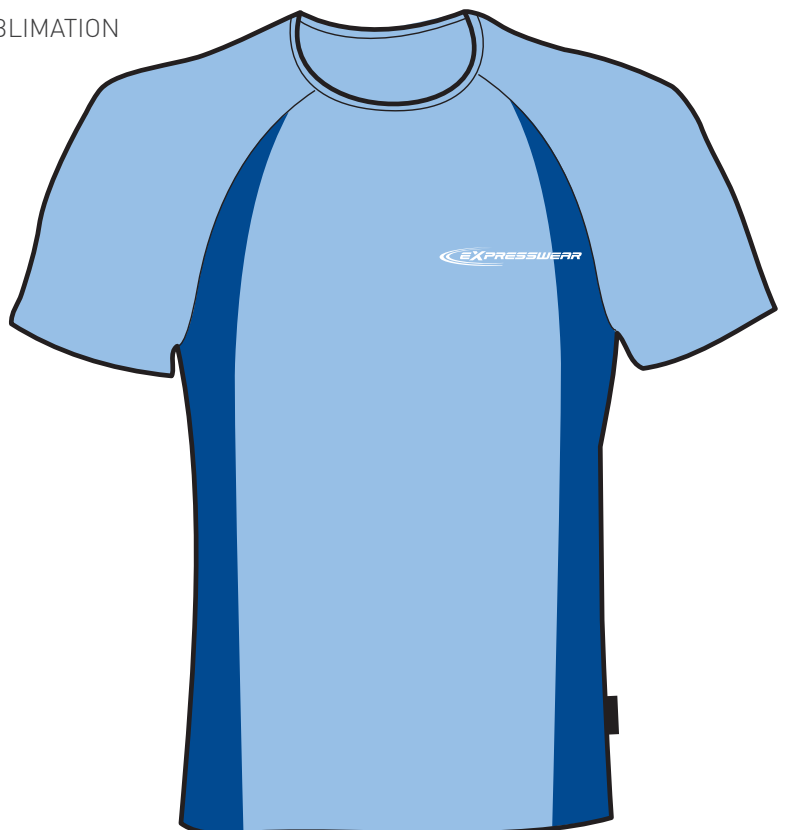
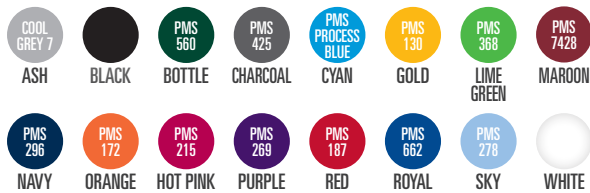
# BREATHE EASY POLY MESH

2001

**SPECIFICATIONS** | SHORT SLEEVE T-SHIRT | MEN'S, LADIES & KIDS SIZES | CONTRAST  
INSERTS | CREW NECK

**DECORATION** | EMBROIDERY | SCREEN PRINT | SUBLIMATION

## COLOURS AVAILABLE IN THIS FABRIC



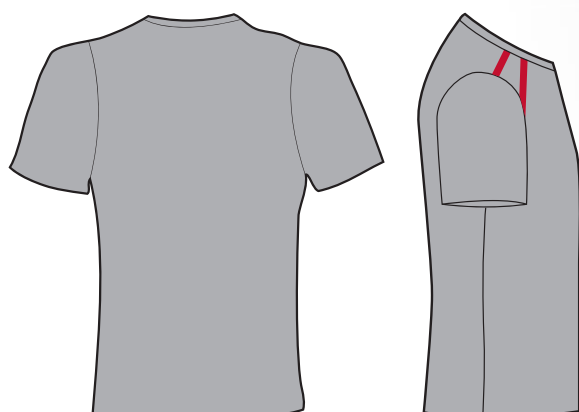
# LIGHT FEEL POLY CHECK

2002

**SPECIFICATIONS** | SHORT SLEEVE T-SHIRT | MEN'S, LADIES & KIDS SIZES | CONTRAST STRIPES | CREW NECK

**DECORATION** | EMBROIDERY | SCREEN PRINT | SUBLIMATION

## COLOURS AVAILABLE IN THIS FABRIC



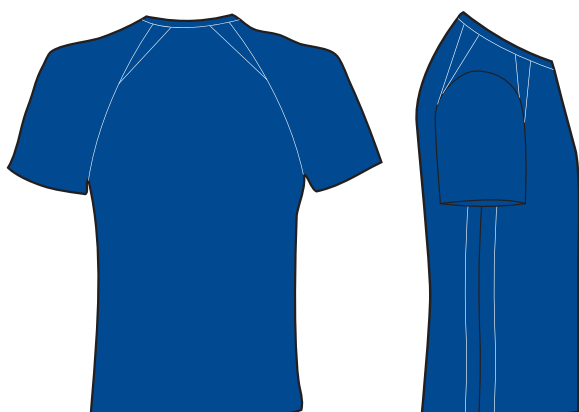
# BREATHE EASY POLY MESH

2003

**SPECIFICATIONS** | SHORT SLEEVE T-SHIRT | MEN'S, LADIES & KIDS SIZES | CONTRAST STITCHING | CREW NECK

**DECORATION** | EMBROIDERY | SCREEN PRINT | SUBLIMATION

## COLOURS AVAILABLE IN THIS FABRIC





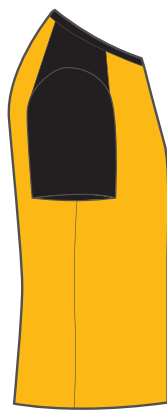
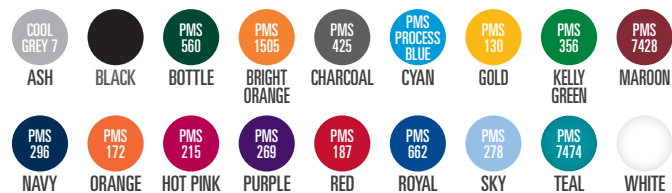
# SMOOTH FINISH POLY JERSEY

2004

**SPECIFICATIONS** | SHORT SLEEVE T-SHIRT | MEN'S, LADIES & KIDS SIZES | CONTRAST SLEEVES & NECKLINE | CREW NECK

**DECORATION** | EMBROIDERY | SCREEN PRINT | SUBLIMATION

## COLOURS AVAILABLE IN THIS FABRIC



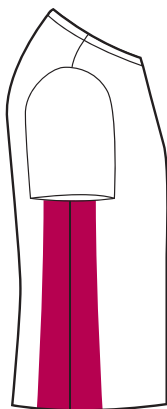
# BREATHE EASY POLY MESH

2005

**SPECIFICATIONS** | SHORT SLEEVE T-SHIRT | MEN'S, LADIES & KIDS SIZES | CONTRAST INSERTS | CREW NECK

**DECORATION** | EMBROIDERY | SCREEN PRINT | SUBLIMATION

## COLOURS AVAILABLE IN THIS FABRIC



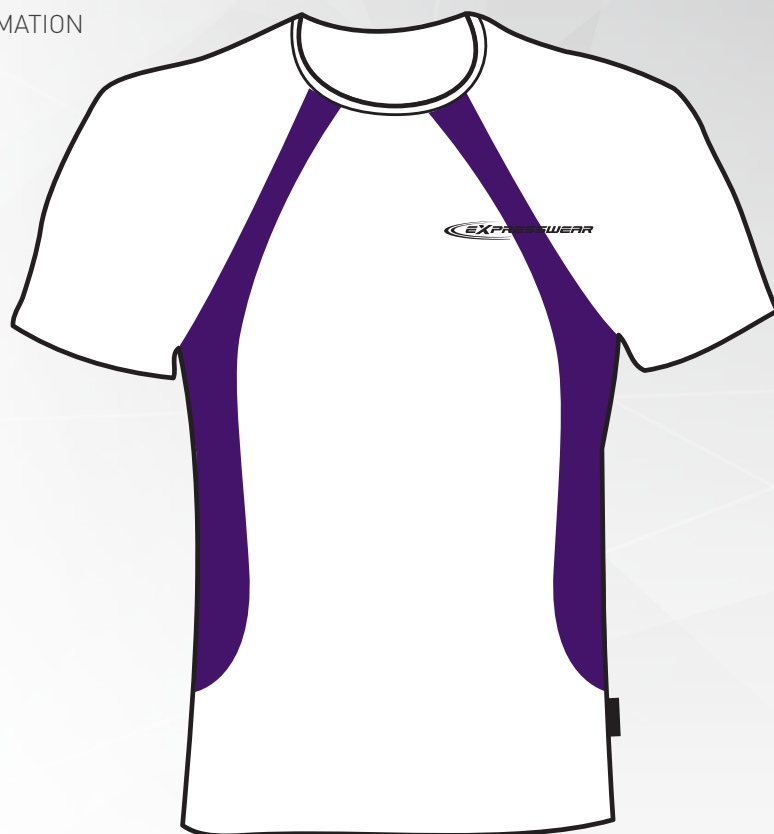
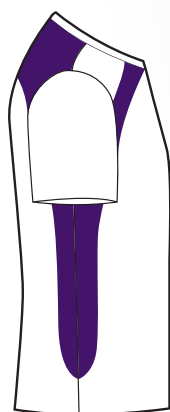
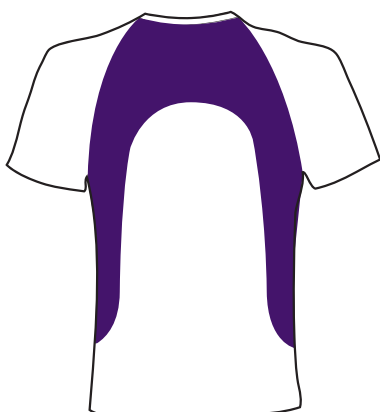
## LIGHT FEEL POLY CHECK

2006

**SPECIFICATIONS** | SHORT SLEEVE T-SHIRT | MEN'S, LADIES & KIDS SIZES | POLY MESH  
CONTRAST INSERTS | CREW NECK

**DECORATION** | EMBROIDERY | SCREEN PRINT | SUBLIMATION

### COLOURS AVAILABLE IN THIS FABRIC



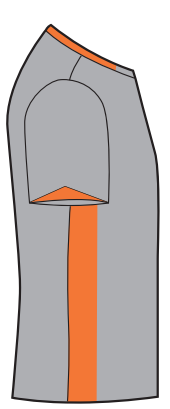
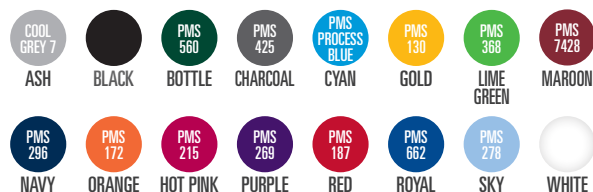
## BREATHE EASY POLY MESH

2007

**SPECIFICATIONS** | SHORT SLEEVE T-SHIRT | MEN'S, LADIES & KIDS SIZES | CONTRAST  
INSERTS | V-NECK

**DECORATION** | EMBROIDERY | SCREEN PRINT | SUBLIMATION

### COLOURS AVAILABLE IN THIS FABRIC



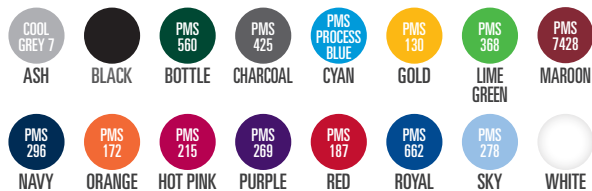
# BREATHE EASY POLY MESH

2008

**SPECIFICATIONS** | SHORT SLEEVE T-SHIRT | MEN'S, LADIES & KIDS SIZES | CONTRAST  
INSERTS | CREW NECK

**DECORATION** | EMBROIDERY | SCREEN PRINT | SUBLIMATION

## COLOURS AVAILABLE IN THIS FABRIC



# BREATHE EASY POLY MESH

2009

**SPECIFICATIONS** | SHORT SLEEVE T-SHIRT | MEN'S, LADIES & KIDS SIZES | CONTRAST  
INSERTS & STRIPES | CREW NECK

**DECORATION** | EMBROIDERY | SCREEN PRINT | SUBLIMATION

## COLOURS AVAILABLE IN THIS FABRIC





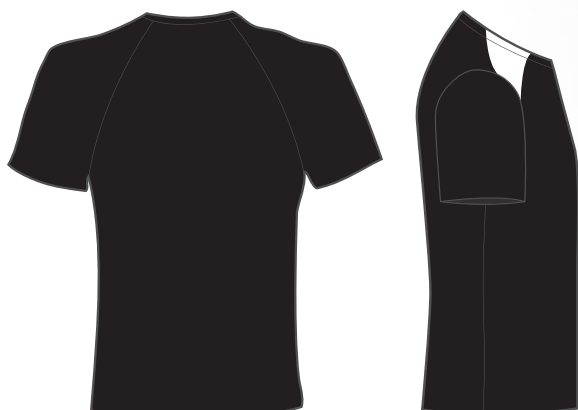
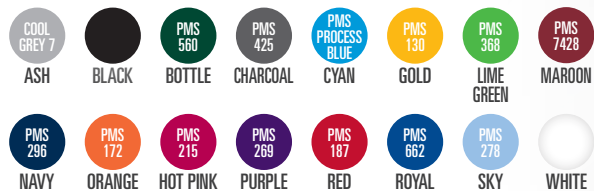
## BREATHE EASY POLY MESH

2010

**SPECIFICATIONS** | SHORT SLEEVE T-SHIRT | MEN'S, LADIES & KIDS SIZES | CONTRAST  
INSERTS | CREW NECK

**DECORATION** | EMBROIDERY | SCREEN PRINT | SUBLIMATION

### COLOURS AVAILABLE IN THIS FABRIC



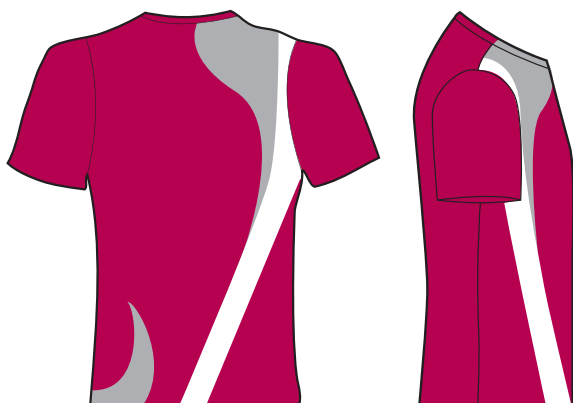
## LIGHT FEEL POLY CHECK

2011

**SPECIFICATIONS** | SHORT SLEEVE T-SHIRT | MEN'S, LADIES & KIDS SIZES | CONTRAST  
CURVED INSERTS | CREW NECK

**DECORATION** | EMBROIDERY | SCREEN PRINT | SUBLIMATION

### COLOURS AVAILABLE IN THIS FABRIC



# LIGHT FEEL POLY CHECK

2012

**SPECIFICATIONS** | SHORT SLEEVE T-SHIRT | MEN'S, LADIES & KIDS SIZES | CONTRAST  
INSERTS | CREW NECK

**DECORATION** | EMBROIDERY | SCREEN PRINT | SUBLIMATION

## COLOURS AVAILABLE IN THIS FABRIC



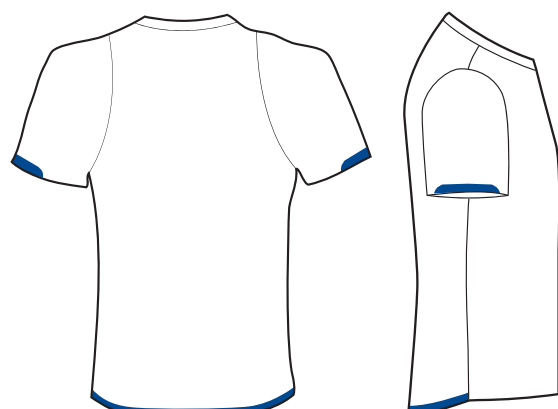
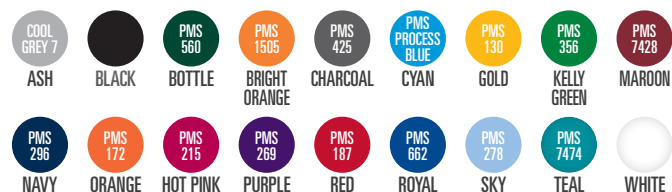
# SMOOTH FINISH POLY JERSEY

2013

**SPECIFICATIONS** | SHORT SLEEVE T-SHIRT | MEN'S, LADIES & KIDS SIZES | POLY MESH  
CONTRAST INSERTS | V-NECK

**DECORATION** | EMBROIDERY | SCREEN PRINT | SUBLIMATION

## COLOURS AVAILABLE IN THIS FABRIC



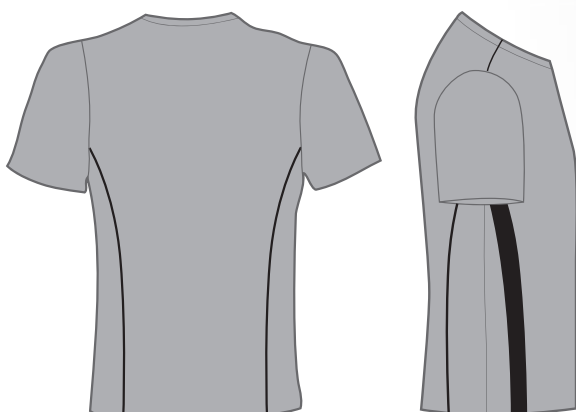
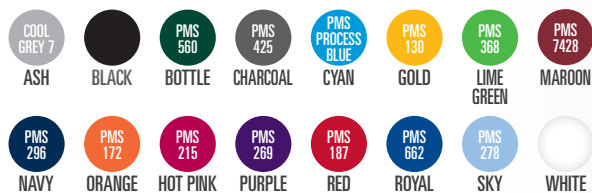
## BREATHE EASY POLY MESH

2014

**SPECIFICATIONS** | SHORT SLEEVE T-SHIRT | MEN'S, LADIES & KIDS SIZES | CONTRAST  
INSERTS & PIPING | CREW NECK

**DECORATION** | EMBROIDERY | SCREEN PRINT | SUBLIMATION

### COLOURS AVAILABLE IN THIS FABRIC



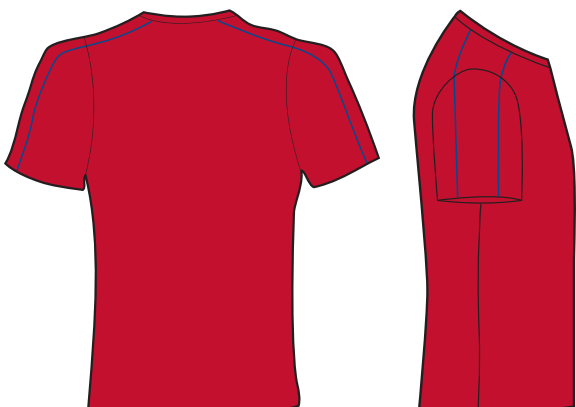
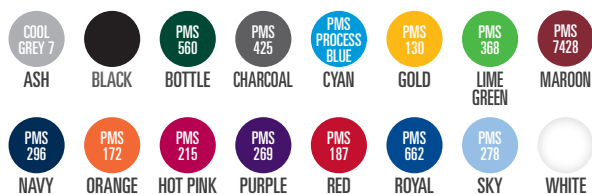
## BREATHE EASY POLY MESH

2015

**SPECIFICATIONS** | SHORT SLEEVE T-SHIRT | MEN'S, LADIES & KIDS SIZES | CONTRAST  
PIPING | CREW NECK

**DECORATION** | EMBROIDERY | SCREEN PRINT | SUBLIMATION

### COLOURS AVAILABLE IN THIS FABRIC





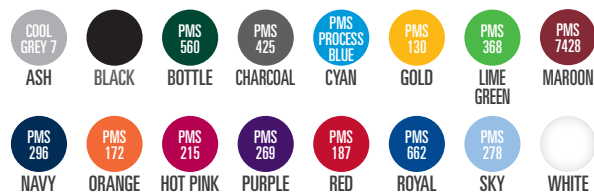
# BREATHE EASY POLY MESH

2016

**SPECIFICATIONS** | SHORT SLEEVE T-SHIRT | MEN'S, LADIES & KIDS SIZES | CONTRAST  
INSERTS & PIPING | V-NECK

**DECORATION** | EMBROIDERY | SCREEN PRINT | SUBLIMATION

## COLOURS AVAILABLE IN THIS FABRIC



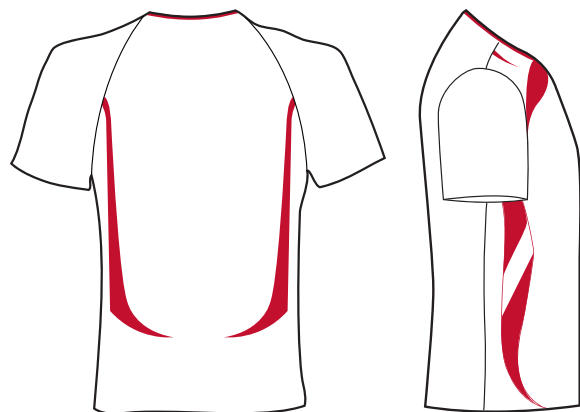
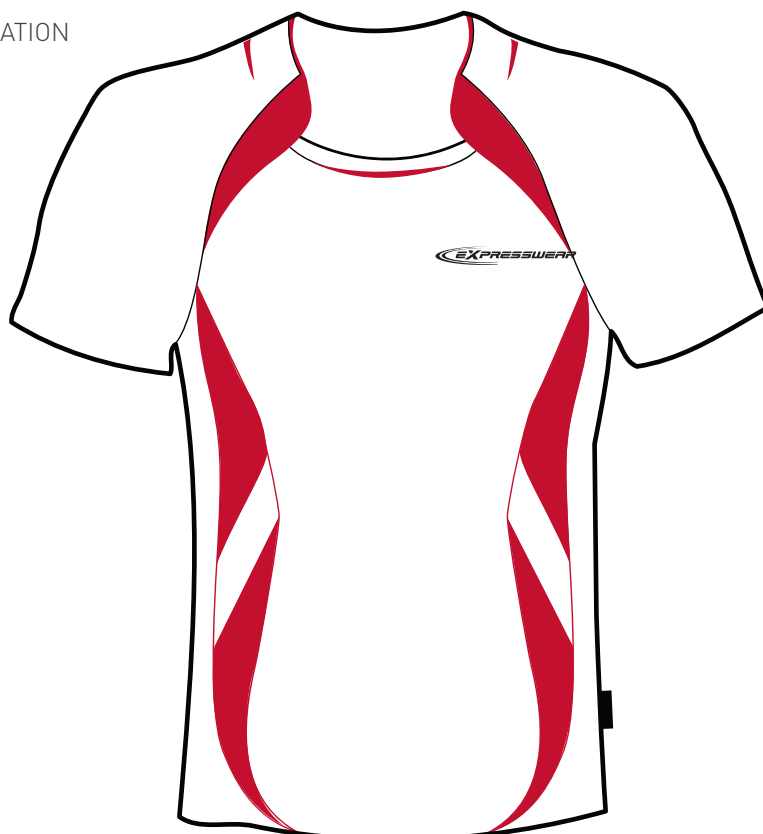
# SMOOTH FINISH POLY JERSEY

2017

**SPECIFICATIONS** | SHORT SLEEVE T-SHIRT | MEN'S, LADIES & KIDS SIZES | POLY MESH  
CONTRAST INSERTS & PIPING | INSET CREW NECK

**DECORATION** | EMBROIDERY | SCREEN PRINT | SUBLIMATION

## COLOURS AVAILABLE IN THIS FABRIC



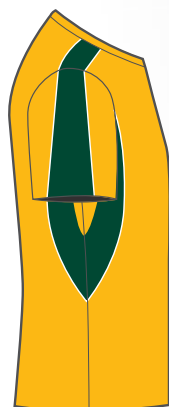
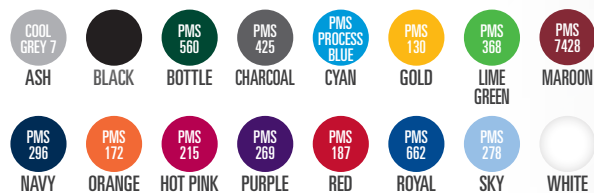
# BREATHE EASY POLY MESH

2018

**SPECIFICATIONS** | SHORT SLEEVE T-SHIRT | MEN'S, LADIES & KIDS SIZES | CONTRAST  
INSERTS | CONTRAST PIPING | CREW NECK

**DECORATION** | EMBROIDERY | SCREEN PRINT | SUBLIMATION

## COLOURS AVAILABLE IN THIS FABRIC



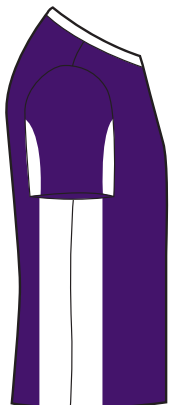
# LIGHT FEEL POLY CHECK

2019

**SPECIFICATIONS** | SHORT SLEEVE T-SHIRT | MEN'S, LADIES & KIDS SIZES | CONTRAST  
INSERTS | KNITTED CONTRAST V-NECK

**DECORATION** | EMBROIDERY | SCREEN PRINT | SUBLIMATION

## COLOURS AVAILABLE IN THIS FABRIC



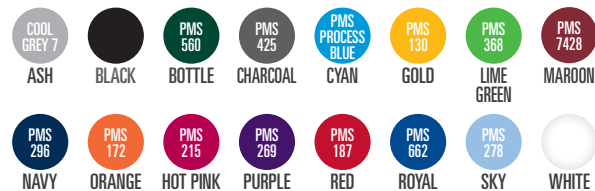
# BREATHE EASY POLY MESH

2020

**SPECIFICATIONS** | SHORT SLEEVE T-SHIRT | MEN'S, LADIES & KIDS SIZES | CONTRAST  
INSERTS | CONTRAST PIPING | KNITTED CREW NECK

**DECORATION** | EMBROIDERY | SCREEN PRINT | SUBLIMATION

## COLOURS AVAILABLE IN THIS FABRIC



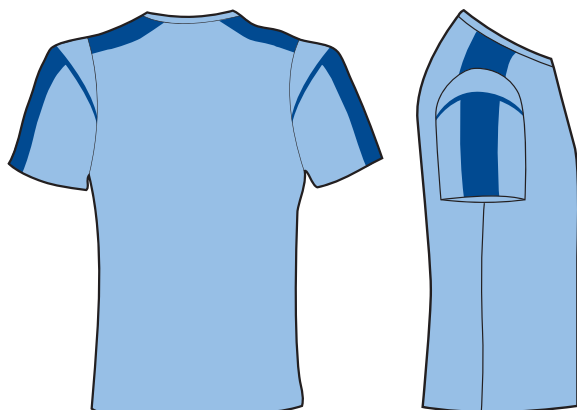
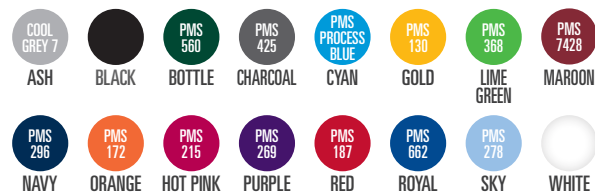
# BREATHE EASY POLY MESH

2021

**SPECIFICATIONS** | SHORT SLEEVE T-SHIRT | MEN'S, LADIES & KIDS SIZES | CONTRAST  
INSERTS | CREW NECK

**DECORATION** | EMBROIDERY | SCREEN PRINT | SUBLIMATION

## COLOURS AVAILABLE IN THIS FABRIC



# LIGHT FEEL POLY CHECK

2022

**SPECIFICATIONS** | SHORT SLEEVE T-SHIRT | MEN'S, LADIES & KIDS SIZES | CONTRAST  
INSERTS | CONTRAST PIPING | CREW NECK

**DECORATION** | EMBROIDERY | SCREEN PRINT | SUBLIMATION

## COLOURS AVAILABLE IN THIS FABRIC



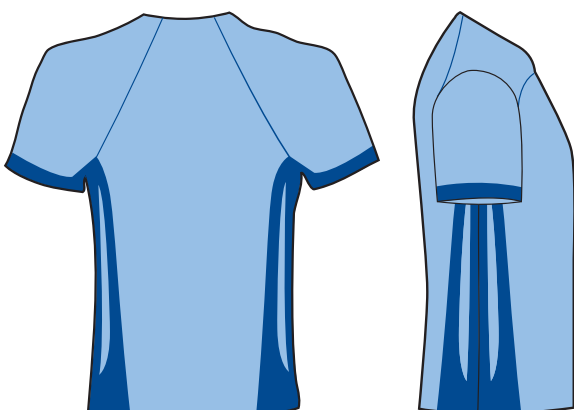
# BREATHE EASY POLY MESH

2023

**SPECIFICATIONS** | SHORT SLEEVE T-SHIRT | MEN'S, LADIES & KIDS SIZES | CONTRAST  
INSERTS & PIPING | INSET CREW NECK

**DECORATION** | EMBROIDERY | SCREEN PRINT | SUBLIMATION

## COLOURS AVAILABLE IN THIS FABRIC



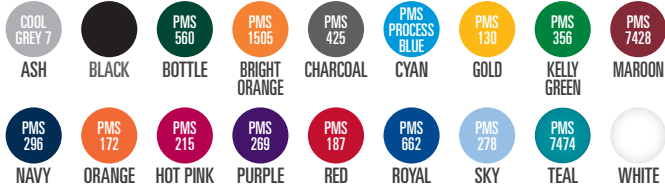
## SMOOTH FINISH POLY JERSEY

2024

**SPECIFICATIONS** | SHORT SLEEVE T-SHIRT | MEN'S, LADIES & KIDS SIZES | CONTRAST  
INSERTS | CREW NECK

**DECORATION** | EMBROIDERY | SCREEN PRINT | SUBLIMATION

## COLOURS AVAILABLE IN THIS FABRIC



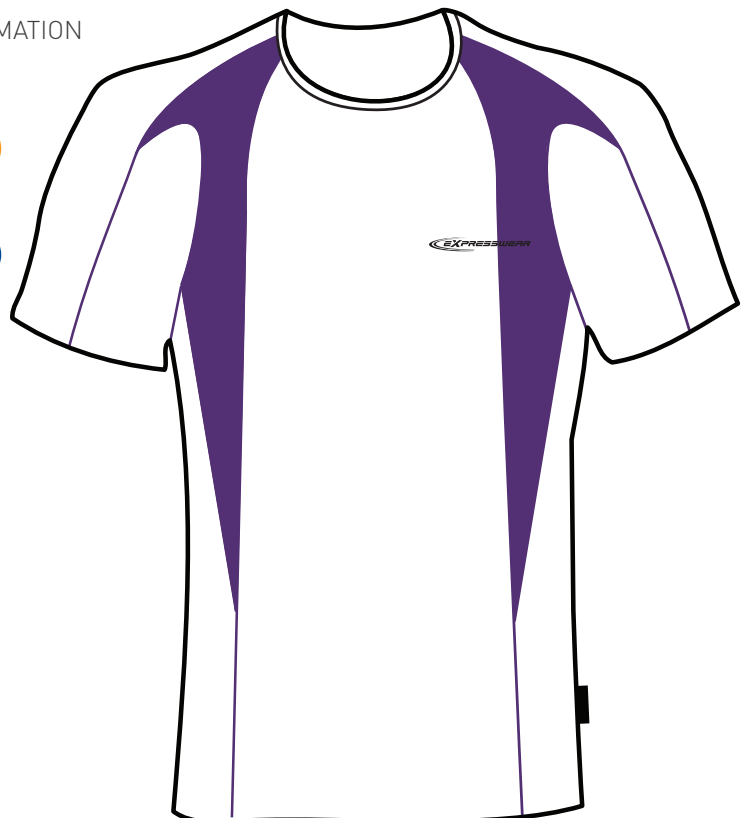
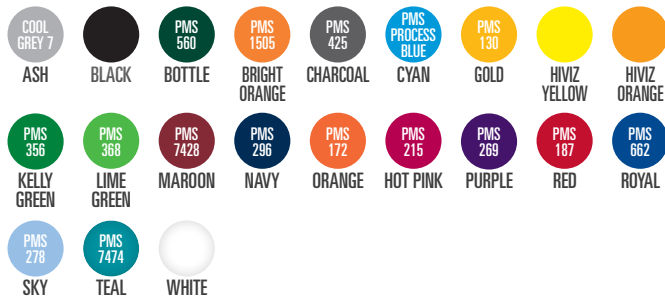
## LIGHT FEEL POLY CHECK

2025

**SPECIFICATIONS** | SHORT SLEEVE T-SHIRT | MEN'S, LADIES & KIDS SIZES | CONTRAST  
INSERTS | CREW NECK

**DECORATION** | EMBROIDERY | SCREEN PRINT | SUBLIMATION

## COLOURS AVAILABLE IN THIS FABRIC





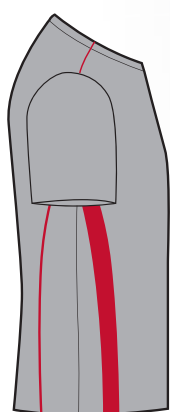
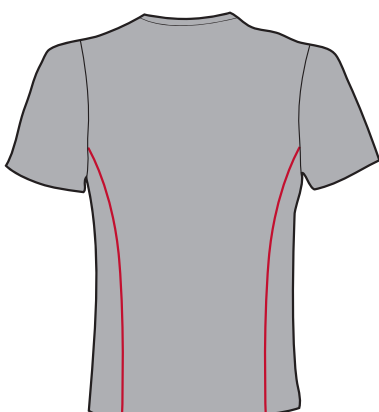
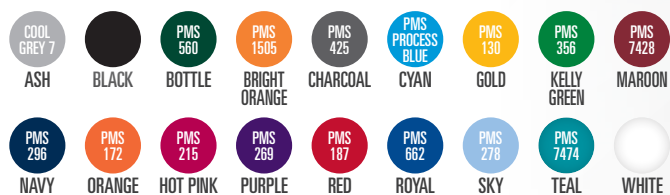
## SMOOTH FINISH POLY JERSEY

2026

**SPECIFICATIONS** | SHORT SLEEVE T-SHIRT | MEN'S, LADIES & KIDS SIZES | CONTRAST  
INSERTS & PIPING | CREW NECK

**DECORATION** | EMBROIDERY | SCREEN PRINT | SUBLIMATION

## COLOURS AVAILABLE IN THIS FABRIC



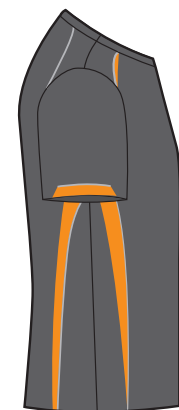
## LIGHT FEEL POLY CHECK

2027

**SPECIFICATIONS** | SHORT SLEEVE T-SHIRT | MEN'S, LADIES & KIDS SIZES | CONTRAST  
INSERTS | CONTRAST PIPING | CREW NECK

**DECORATION** | EMBROIDERY | SCREEN PRINT | SUBLIMATION

## COLOURS AVAILABLE IN THIS FABRIC



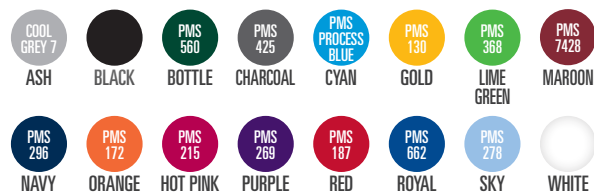
# BREATHE EASY POLY MESH

2028

**SPECIFICATIONS** | SHORT SLEEVE T-SHIRT | MEN'S, LADIES & KIDS SIZES | CONTRAST  
INSERTS | CONTRAST PIPING | CREW NECK

**DECORATION** | EMBROIDERY | SCREEN PRINT | SUBLIMATION

## COLOURS AVAILABLE IN THIS FABRIC



# LIGHT FEEL POLY CHECK

2029

**SPECIFICATIONS** | SHORT SLEEVE T-SHIRT | MEN'S, LADIES & KIDS SIZES | CONTRAST  
INSERTS | CONTRAST PIPING | CREW NECK

**DECORATION** | EMBROIDERY | SCREEN PRINT | SUBLIMATION

## COLOURS AVAILABLE IN THIS FABRIC



# LIGHT FEEL POLY CHECK

2030

**SPECIFICATIONS** | SHORT SLEEVE T-SHIRT | MEN'S, LADIES & KIDS SIZES | CONTRAST  
INSERTS | V-NECK

**DECORATION** | EMBROIDERY | SCREEN PRINT | SUBLIMATION

## COLOURS AVAILABLE IN THIS FABRIC



# BREATHE EASY POLY MESH

2031

**SPECIFICATIONS** | SHORT SLEEVE T-SHIRT | MEN'S, LADIES & KIDS SIZES | CONTRAST  
INSERTS | CONTRAST PIPING | CREW NECK

**DECORATION** | EMBROIDERY | SCREEN PRINT | SUBLIMATION

## COLOURS AVAILABLE IN THIS FABRIC



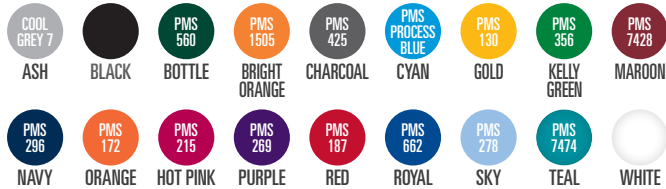
## SMOOTH FINISH POLY JERSEY

2032

**SPECIFICATIONS** | SHORT SLEEVE T-SHIRT | MEN'S, LADIES & KIDS SIZES | CONTRAST  
 INSERTS & PIPING | POLY MESH MATCHING INSERTS | V-NECK

**DECORATION** | EMBROIDERY | SCREEN PRINT | SUBLIMATION

## COLOURS AVAILABLE IN THIS FABRIC



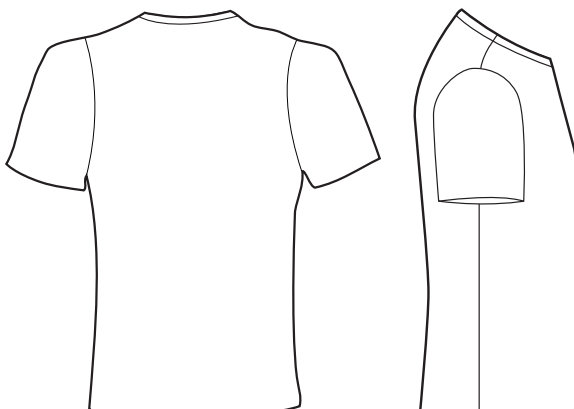
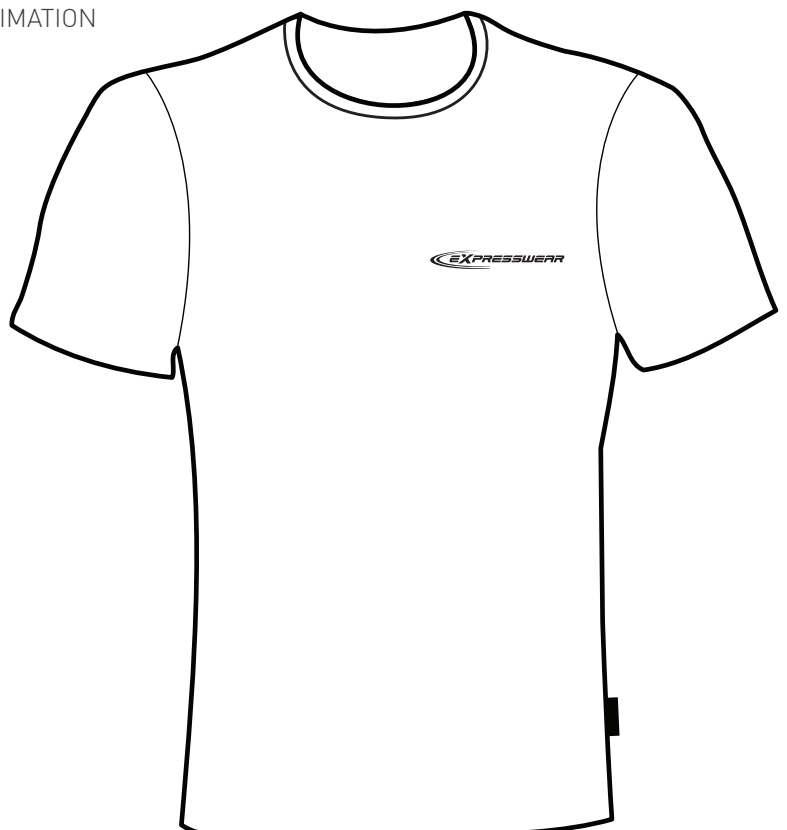
## BREATHE EASY POLY MESH

2033

**SPECIFICATIONS** | SHORT SLEEVE T-SHIRT | MEN'S, LADIES & KIDS SIZES | CREW NECK

**DECORATION** | EMBROIDERY | SCREEN PRINT | SUBLIMATION

## COLOURS AVAILABLE IN THIS FABRIC





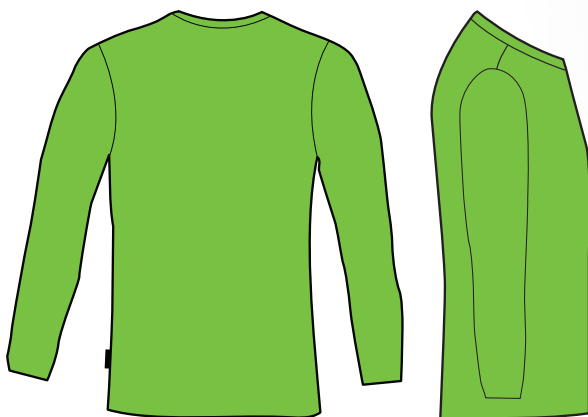
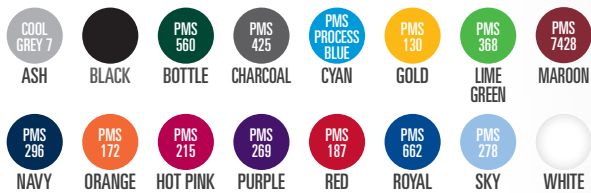
## BREATHE EASY POLY MESH

2034

SPECIFICATIONS | LONG SLEEVE T-SHIRT | MEN'S, LADIES &amp; KIDS SIZES | CREW NECK

DECORATION | EMBROIDERY | SCREEN PRINT | SUBLIMATION

## COLOURS AVAILABLE IN THIS FABRIC



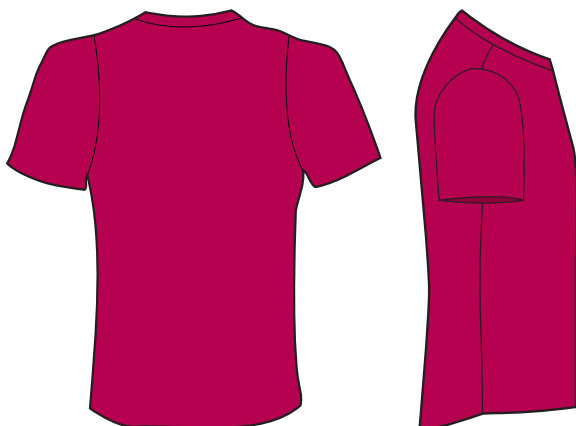
## BREATHE EASY POLY MESH

2035

SPECIFICATIONS | SHORT SLEEVE T-SHIRT | MEN'S, LADIES &amp; KIDS SIZES | V-NECK

DECORATION | EMBROIDERY | SCREEN PRINT | SUBLIMATION

## COLOURS AVAILABLE IN THIS FABRIC



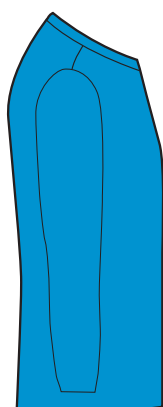
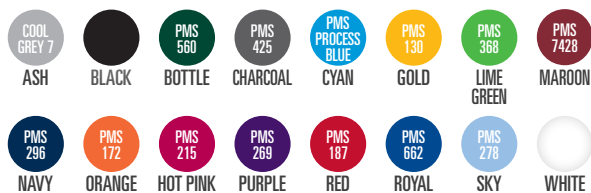
## BREATHE EASY POLY MESH

2036

SPECIFICATIONS | LONG SLEEVE T-SHIRT | MEN'S, LADIES &amp; KIDS SIZES | V-NECK

DECORATION | EMBROIDERY | SCREEN PRINT | SUBLIMATION

## COLOURS AVAILABLE IN THIS FABRIC



The image displays two pieces of sportswear against a black background. On the left is a bright blue short-sleeved polo shirt with a white stripe on the sleeve. On the right is a white long-sleeved jacket with green panels on the lower sleeves and sides. The jacket features a Castrol logo and the text 'OFFICIAL SPONSOR' on the upper back, along with the FIFA World Cup Brazil 2014 logo.

FASTEST IN FASHION